

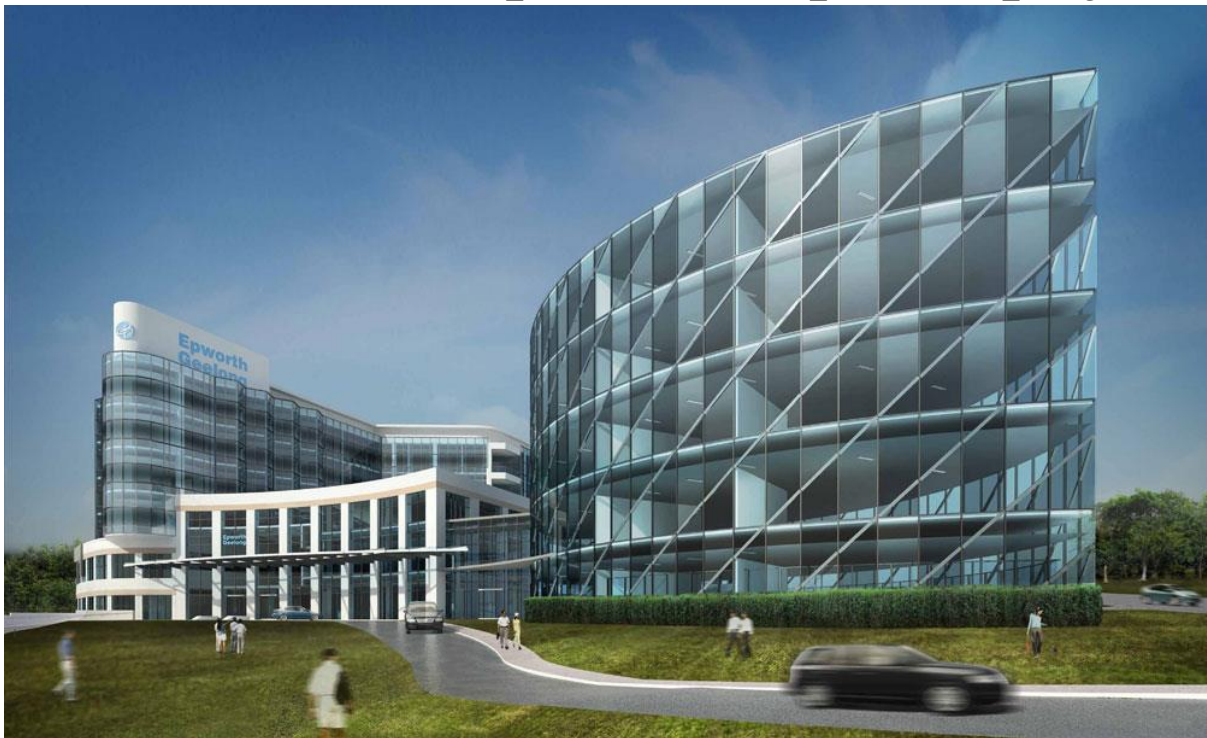


media release

3 October 2014

FOR IMMEDIATE RELEASE

Local business to be part of the Epworth project



Geelong Telephone Company (GTC), a local Geelong company operating for over 34 years, has been awarded the network infrastructure installation contract by Appselec. As the project's electrical contractor, Appselec has supported local business by subcontracting this section of their scope to GTC.

"As a local company we are thrilled to be a part of Geelong's future. It is exciting to see new developments such as this project in our region offering many new jobs and opportunities for local business" said Renato Trentin, Managing Director of GTC. "As a member of the Driving Business Growth – Advocacy Pillar Committee, which is part of the Geelong Chamber of Commerce, I see how hard some businesses are doing. Projects such as these will see great opportunities and will bring back some confidence in the local community" said Mr Trentin.

Geelong Chamber of Commerce CEO, Bernadette Uzelac welcomed the announcement and applauded Epworth Geelong and Appselec for showing their support for local business. "We congratulate Chamber member Geelong Telephone Company on being awarded this significant contract and

acknowledge Epworth Geelong, a corporate partner of the Chamber, and Appselec for demonstrating their commitment to supporting local business” said Ms Uzelac. “Geelong has a diverse range of highly competent local businesses capable of delivering to the standards of excellence required for complex projects such as this. It is pleasing to see this capability being recognized” commented Ms Uzelac.

The Epworth Geelong will be a comprehensive acute and rehabilitation private hospital integrating clinical practice with teaching and research.

The hospital, opening in mid 2016, is located to the north of Deakin University's Waurn Ponds campus and will provide an emergency department, inpatient beds, surgery, medical consulting suites, rehabilitation facility, a complex care unit, maternity ward and a clinical education and simulation precinct.

As a critical project to the Greater Geelong and Western regions, Geelong Telephone Company is thrilled to be part of this development.

